



Importing Results

Race Results

Purge Results Calculate Calc All Prov

Daytona
Zen Joltis
Michigan
Daytona
Talladega
Daytona
Talladega
Daytona
Zen Joltis
Coca Cola

F	Q	D	HANDLE	Interval	Laps	Led	M	H	C	Pts	Earnings	Qual	Status
1	3	2	MR-TRAFFIC	151.573	60	10				52	51000	--	Running
2	5	3	opticpros	-0.09	60	0				48	45000	--	Running
3	1	-2	Witchdoc7_101	-5.11	60	0				46	44000	--	Running
4	4	0	Conrules	-5.71	60	0				44	38500	--	Running
5	13	8	deafmetal	-1L	59	1			✓	42	38000	--	Accident
6	12	6	Eraser X	-2L	58	28	✓			45	37500	--	Accident
7	7	0	Zig-Zagg	-2L	58	0				38	33500	--	Running
8	6	-2	denc1	-2L	58	0				36	32000	--	Running
9	10	1	johnsalvatore	-3L	57	12				36	31500	--	Running
10	11	1	otisprod	-6L	54	0				32	29000	--	Running

Penalties:

Lap	Car	HANDLE	Infraction	Pts	Penalty
17	77	reblg	Passing under yellow	0	Held for 2 seconds
17	77	reblg	Speeding entering pits	0	Held for 15 seconds
34	14	javoro	Speeding entering pits	0	Held for 15 seconds
55	41	Zig-Zagg	Speeding entering pits	0	Held for 15 seconds
58	10	johnsalvatore	Entering closed pits	0	Go to end of longest line

Import from file

Laps: 60 Weather: Clear, 60 °F, Southwest 0 mph ☒ Completed

Cautions: 4 Caution Laps: 10 Leaders: 6 Lead Chgs: 10

League: BNR IROC
Season: BNR IROC Season 1

Close

Overview

Now we're getting down to brass tacks. On the left is a list of all events for the current League/Season. The two grids on the right show the results and penalties for the currently selected event. The entry fields at the bottom show the race details for the event.

Calculate - This button will recalculate the points for the currently selected event.

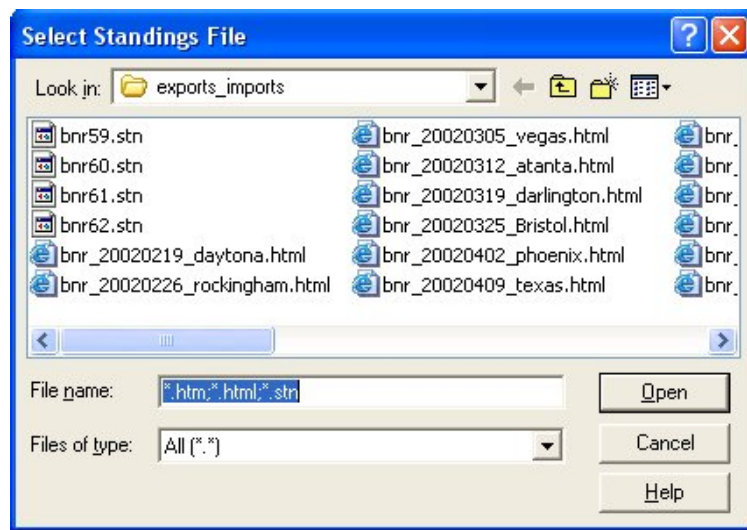
Calc All - This button will recalculate the points for ALL events. This is very handy if you mess up the rules setup as you start using RPM or if you decide to change the rules mid-season.

Purge Results - This button at the top left of the screen will delete all driver results and penalties for the currently selected event.

The only two buttons left are "Import from file" and "Prov"

Import from file

Clicking this button will open the following screen:



Navigate to the location of your standings files (ex: C:\Papyrus\Nascar Racing 2002 Season\exports_imports) and select the standings file for the current event. The file will be imported and you will be presented with the following screen:

Results Worksheet

Event:
06/09/2002 - Zen Joltis Quad Oval

Import File Calculate Save Results

Imported Race Stats
04/15/2002 - MARTINSVILLE SPEEDWAY
Laps: 150 Cautions: 0 Lead Chgs: 2
Caution Laps: 0 Leaders: 2
Weather: Clear, 70 F, Northeast 0 mph

F	Q	D	Q Results	Car	Driver	Det. Driver	Interval	Laps	Led	M	H	C	Pts	Earnings	Status
1	1	0	--	11	JC	<Add Driver>	88.589	150	98	✓			55	55000	Running
2	2	0	--	122	tonysq	tonysq	-2L	148	0				48	45000	Running
3	3	0	--	117	T Fowler	<Add Driver>	-3L	147	52				46	42500	Running
4	7	3	--	13	D	MR-TRAFFIC	-4L	146	0				44	38500	Running
5	5	0	--	18	grHop	boatmike_	-9L	141	0				42	36500	Running
6	10	4	--	44	B Smith	otisprod	-11L	139	0			✓	40	35500	Running
7	6	-1	--	21	C DeWall	<Add Driver>	-17L	133	0				38	33500	Running
8	4	-4	--	33	Rooy	Eraser X	-59L	91	0				36	32000	Running
9	9	0	--	88	c peeks	<Add Driver>	-78L	72	0				34	30500	Running
10	8	-2	--	12	Nova	<Add Driver>	-100L	50	0				32	29000	Running

Lap	Car	Infraction	Neg Pts	Penalty
30	33	Speeding entering pits	0	Held for 15 seconds
59	33	Speeding entering pits	0	Held for 15 seconds

PLEASE NOTE: The track names and dates on the left and right don't match. On the left is the info for the event you had selected on the Results screen, on the right is the info that was imported from the standings file. This is an indication that we picked the wrong file! We would now want to click the **Import File** button to import the correct standings file. We'll just go ahead and use this one for now.

The race results and penalties grids are presented here for you to review and make changes before the information is merged with the database. When you are done editing, click the **Save Results** button to merge the standings into the database.

Look at the #11 driver, he hasn't raced previously in this league so he's not listed on the driver roster. If you leave the "<Add Driver>" setting, he will be added to the roster. If you don't want him to be added, Click on "<Add Driver>" and change it to "<Ignore>".

Look at the #13, #18, #44 and #33 drivers. The Driver name on the left (D, grHop, etc.) is what was read from the standings file. The program uses the driver name and number to try and match the imported driver with the current roster in the database. The system's choice is listed in the Determined (Det.) Driver column. If the system can't make a match, it assigns the "<Add Driver>" setting.

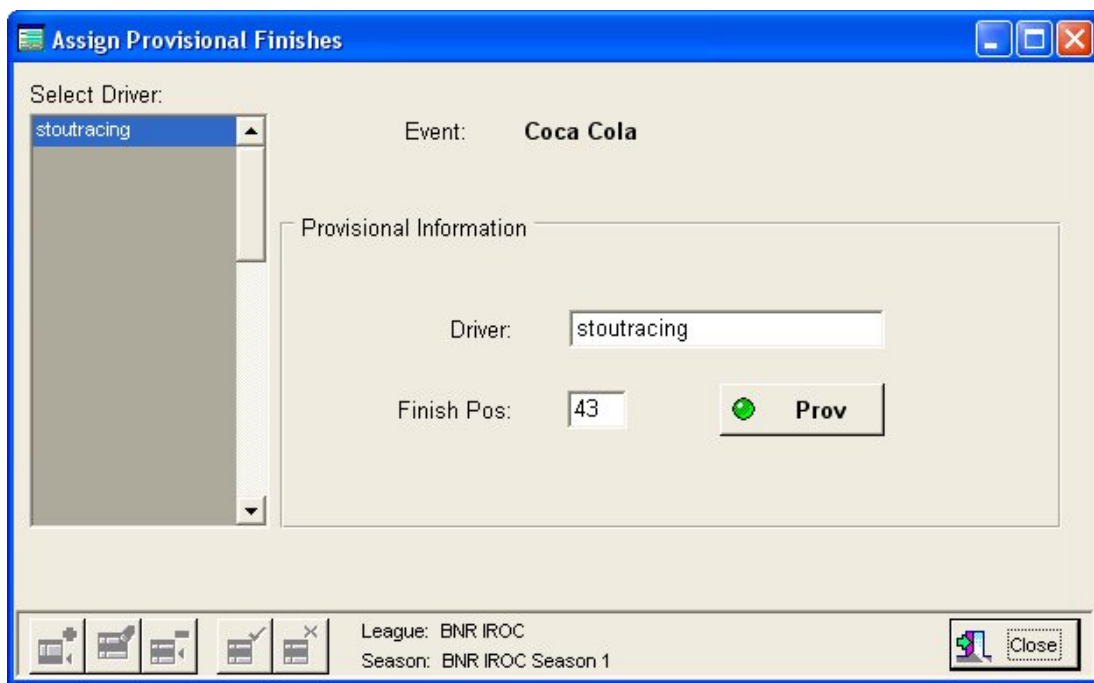
When a driver changes their name or number, you will have to pick the correct name on the "Determined Driver" column. If a driver permanently changes their name or number, you might want to edit their info on the Roster screen.

The **Calc** button here recalculates the points based on the changes you made.

Use the Window's **X** in the upper right to close this screen without merging any data. You will be returned to the previous screen.

Provisionals

So, we all have lives. How can we easily give points to a driver who missed the current event? Click the **Prov** button, that's how.



The event name is listed for reference, and all drivers in the roster who don't have standings in the current event are listed on the left. Just pick a driver and their name shows up in the "Driver" box. Enter the finishing position you are granting the driver and click on the green **Prov** button. A standings record for that driver will be inserted into the event standings in such a way that you will know they've been given a provisional. They will also receive points/money based on the position you selected.

If you mess up and assign the wrong finishing position to a driver, just delete their line from the Results screen and come back here, they will be listed again.

Tips and Tricks:

- You can manually add, edit or delete any information on the results and penalties grids. Click on the grid you want to change and then use the buttons at the bottom of the screen as described in the Overview.
- Have a driver acting really bad? Click on the penalty grid, click the **Add** button, select the driver and put some points in there. Those points will be deducted in the Standings screen and in the exported pages.
- Want to give bonus points for something not included in the program? Give the driver a penalty and assign him **negative** points. These points will be **added** to the drivers points in the Standings screen and the exported pages.

[Leagues](#)
[Events](#)
[Importing Results](#)
[Standings / Exporting](#)
[Download](#)

Copyright © 2002: ACS Software - RPM was created using dBASE software:

